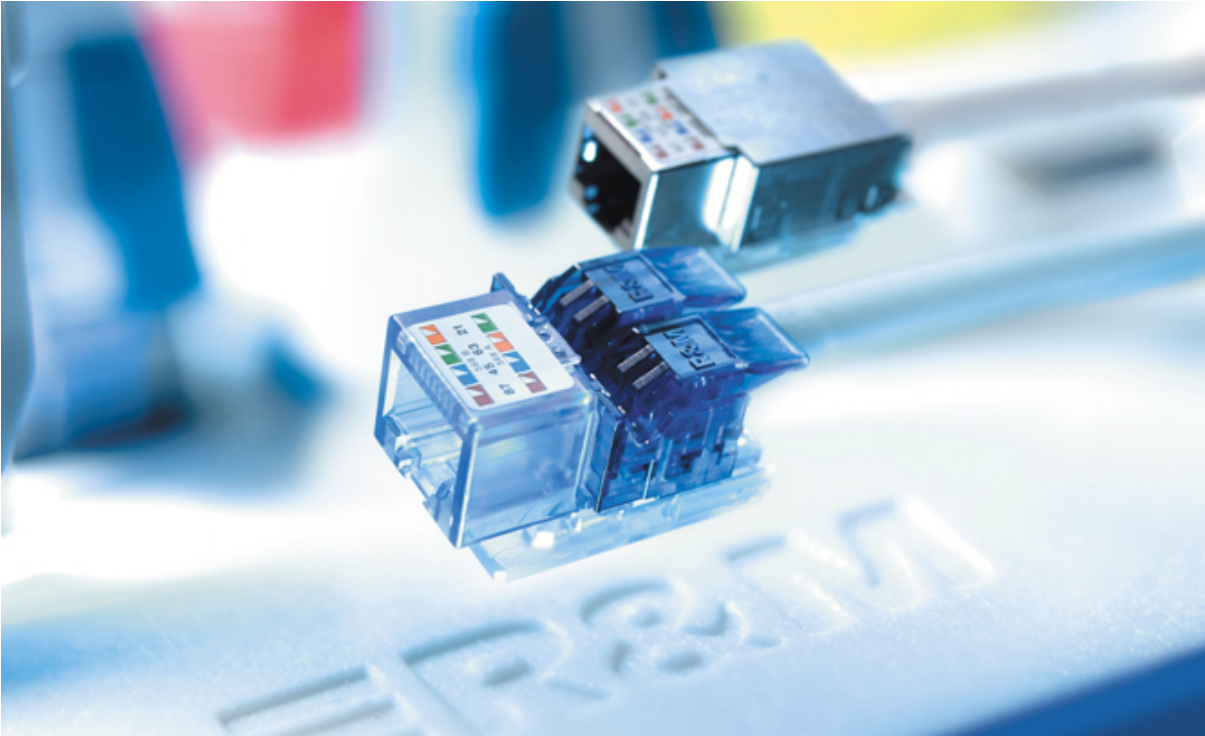


# Real10 Solutions



## Real10 Product Range




October 2005

## Real10 Product Range

The STAR Real10 product range, both shielded and unshielded, in the R&Mfreenet system provides real 10 Gigabit Ethernet performance over the full 100 meter range.

Now, in addition to the standard Real10 Cat 6 STP components, R&M has released a new UTP range designed specifically for 10 Gigabit Ethernet applications. R&M has used its recognized know-how in “shielded” technology to create a unique UTP solution which provides effective protection against alien disturbances.

## Real10 UTP Range

|   | Description   | Part Number |
|---|---|-------------|
|    | <b>Connection Module Real10 Cat 6, 1 x RJ45/u</b><br>Cat. 6 connection module with one unshielded RJ45 port. Includes dust cover, cable tie and installation instructions.  | R313064     |
|   | <b>Connection Module Real10 Cat 6, 100 x RJ45/u</b><br>100 x RJ45 Cat 6 connection modules (R313064) in an installation kit. Includes WARP housing, dust cover, cable tie and installation instructions.<br>100 x RJ45/u Real10 Cat 6 connection modules in an installer kit. | R313083     |
|  | <b>Snap-in Connection Module Real10 Cat 6, 1xRJ45/u</b><br>Cat. 6 connection module with one unshielded RJ45 port. Includes WARP housing, snap-in adapter, dust cover, cable tie and installation instructions  | R313090     |



**Snap-in Connection Module Real10 Cat 6, 100xRJ45/u**

R313092

100 x RJ45 Cat 6 snap-in connection modules (R313090) in an installation kit. Includes WARP housing, snap-in adapter, dust cover, cable tie and installation instructions.



**Connection Module Real10 Cat 6, 1xRJ45/u, Special**

R313084

Cat. 6 connection module without mounting plate and one unshielded RJ45 port. Includes WARP housing, dust cover, cable tie and installation instructions.



**Connection Module Real10 Cat 6, 1xRJ45/u, Flap Jack**

R313103

Cat. 6 connection module without mounting plate and one unshielded RJ45 port. Includes modified WARP housing, dust cover, cable tie and installation instructions. Designed for use with Flap Jack Module Holder and Flap Jack Wall Plate.



**19" 1U Patch Panel, 16 x RJ45/u, Real10, Cat 6**

R313086

Patch panel with 16 unshielded Real10 Cat 6 RJ45 ports. Kit comprises one 19" 1U rack, mounting kit, three jumpering brackets, four labelling strips and four labelling windows. Includes cable ties, dust covers and installation instructions.

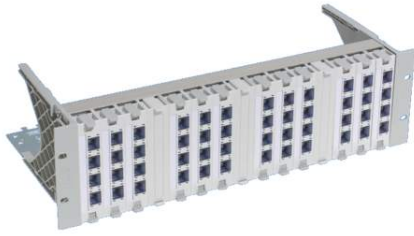


**19" 1U Patch Panel, 24 x RJ45/u, Real10, Cat 6**

R313087

Patch panel with 24 unshielded Real10 Cat 6 RJ45 ports. Kit comprises one 19" 1U metal rack with integrated cable tie shelf and mounting kit. Includes cable ties, dust covers and installation instructions.

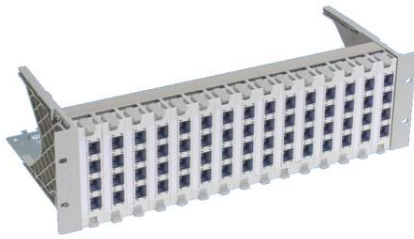
Real10 Product Range



**19" 3U Global Patch Panel, 48 x RJ45/u, Real10, Cat 6**

R313088

Patch panel with 48 unshielded Real10 Cat 6 RJ45 ports. Kit comprises one 19" 3U Global patch panel, 12 connection module holders, and 3 Global blind covers. Includes cable tie shelf, mounting kit, dust covers, cable ties, labelling strips and installation instructions.



**19" 3U Global Patch Panel, 60 x RJ45/u, Real10 Cat 6**

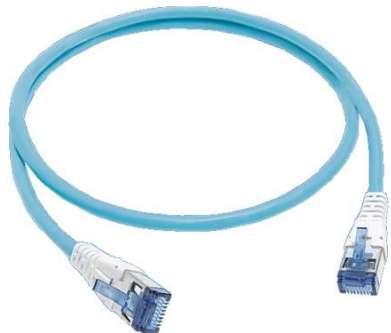
R313089

Patch panel with 60 unshielded Real10 Cat 6 RJ45 ports. Kit comprises one 19" 3U Global patch panel and 15 connection module holders. Includes cable tie shelf, mounting kit, dust covers, cable ties, labelling strips and installation instructions.



**Installation Cable Real10 Cat 6, U/UTP 4P, LSZH**

R312808



**Patch Cords, unshielded U/UTP 4P, LSZH, Real10 Cat 6**

- 1.0 m
- 1.5 m
- 2.0 m
- 3.0 m
- 5.0 m

- R312804
- R312805
- R312806
- R312807
- R312803

## Real10 STP Range



**Connection Module, Real10 Cat 6,  
1 x RJ45/s**

R302372

Cat 6 connection module with one shielded RJ45 port. Includes EMC cover, dust cover, cable tie and installation instructions.



**Connection Module, Real10 Cat 6,  
100 x RJ45/s**

R304327

100 x RJ45 Cat 6 connection modules (R302372) in an installation kit. Includes EMC covers, dust covers, cable ties and installation instructions.



**Snap-in Connection Module,  
Real10 Cat 6, 1 x RJ45/s**

R304373

Cat 6 connection module with one shielded RJ45 port. Includes snap-in adapter, EMC cover, dust cover, cable tie and installation instructions.



**Snap-in Connection Module,  
Real10 Cat 6, 100 x RJ45/s**

R308732

100 x RJ45 Cat 6 snap-in connection modules (R304373) in an installation kit. Includes snap-in adapters, EMC covers, dust covers, cable ties and installation instructions.



**Connection Module, Real10 Cat 6, 1 x RJ45/s, Special**

R305113

Cat 6 connection module without mounting plate and one shielded RJ45 port. Includes EMC cover, dust cover, cable tie and installation instructions.



**Connection Module, Real10 Cat 6, 1 x RJ45/s, Flap Jack**

R305764

Cat 6 connection module without mounting plate and one shielded RJ45 port. Includes modified EMC cover, dust cover, cable tie and installation instructions. Designed for use with Flap Jack Module Holder and Flap Jack Wall Plate.



**19" 1U Patch Panel, 16 x RJ45/s, Real10 Cat 6**

R305887

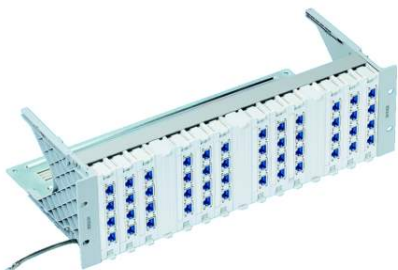
Patch panel with 16 shielded Cat 6 RJ45 ports. Kit comprises one 19" 1U rack, 16 shielded, single RJ45 Cat 6 connection modules, mounting kit, three jumpering brackets, four labelling strips and four labelling windows. Includes EMC covers, cable ties, dust covers and installation instructions.



**19" 1U Patch Panel, 24 x RJ45/s, Real10 Cat 6**

R305120

Patch panel with 24 shielded Cat 6 RJ45 ports. Kit comprises one 19" 1U metal rack with integrated cable tie shelf, 24 shielded RJ45 connection modules and mounting kit. Includes EMC covers, dust covers, cable ties and installation instructions.



**19" 3U Global Patch Panel, 48 x RJ45/s, Real10 Cat 6**

R302360

Patch panel with 48 shielded Cat 6 RJ45 ports. Kit comprises one 19" 3U Global patch panel/s, 12 connection module holders, Global/s, 48 shielded Cat 6 connection modules and 3 Global blind covers. Includes cable tie shelf, earthing system, EMC covers,



mounting kit, dust covers, cable ties, labelling strips and installation instructions.



**19" 3U Global Patch Panel, 60 x RJ45/s, Real10 Cat 6**

R302362

Patch panel with 60 shielded Cat 6 RJ45 ports. Kit comprises one 19" 3U Global patch panel/s, 15 connection module holders, Global/s, and 60 shielded Cat 6 connection modules. Includes cable tie shelf, earthing system, EMC covers, mounting kit, dust covers, cable ties, labelling strips and installation instructions.

**Installation Cable, Real10 Cat 6 U/FTP 4P, LSZH**

R308247

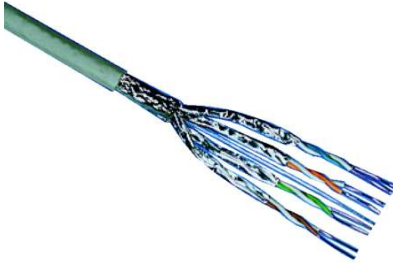


**Siamese Cable, Real10 Cat 6, 2x U/FTP 4P, LSZH**

R309652

**Installation Cable, Real10 Cat 6e S/FTP 4P, LSZH**

R305649

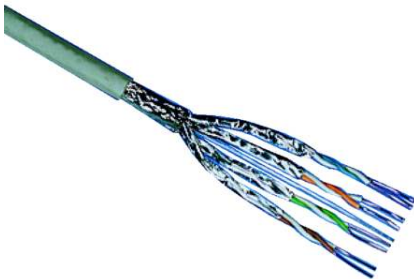


**Installation Cable, Real10 Cat 7 light S/FTP 4P, LSZH**

R35257

**Siamese Cable, Real10 Cat 7 light, S/FTP 4P,LSZH**

R35258

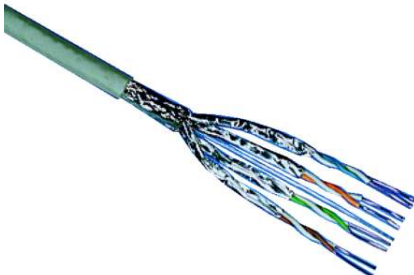


**Installation Cable, Real10 Cat 7 S/FTP 4P, LSFRZH**

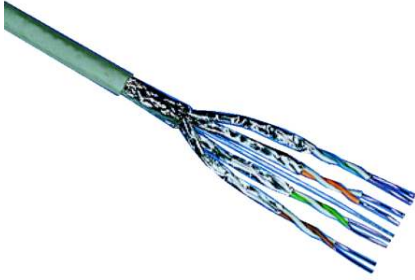
R35060

**Siamese Cable Real10 Cat 7, 2xS/FTP 4P, LSFRZH**

R35061

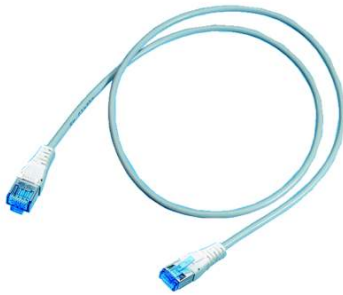


Real10 Product Range



**Installation Cable, Real10 Cat 7  
S/FTP 4P, LSFRZH**

R306257



**Patch Cords, shielded S/FTP 4P,  
LSFRZH, Real10 Cat 6**

Connection 1:1

0.5m

R302331

1.0m

R302332

1.5m

R302333

2.0m

R302334

3.0m

R302335

5.0m

R302336

7.5m

R302337

10.0m

R302338

12.5m

R302339

15.0m

R302340

20.0m

R302418