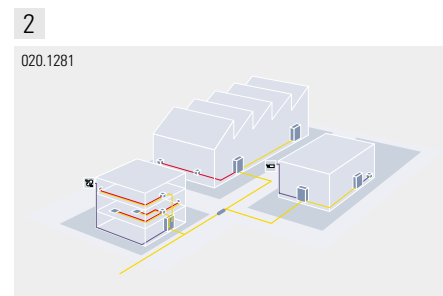


get **more** 010.2936

- Protection against moisture, dust and water (IP54 & IP67)
- Enhanced protection against mechanical hazards
- Modular system for both fiber optic (SC-RJ) and copper connectors (RJ45)

@

R&M



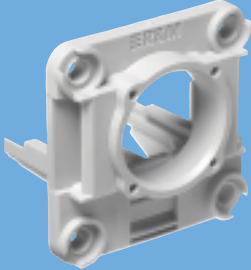


Products	Page
1 RJ45 connectors, IP67	214
SC-RJ connectors, IP67	216
2 Pre-assembled field cables	217
Wall-mount distributors, IP66/67	218
DIN rail mounting plates	219




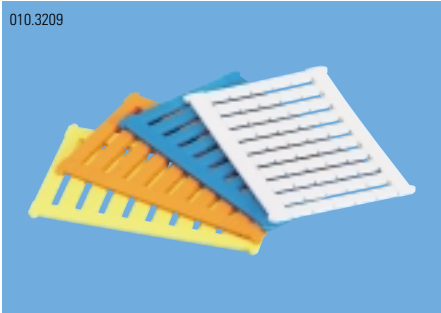
RJ45 connectors, IP67



The RJ45 IP67 complies with IAONA requirements for heavy duty environments. IAONA stands for an international alliance of manufacturers and operators of automation systems. They set up the industrial Ethernet standards for example. The IAONA defines heavy duty areas as demanding production environments in accordance with the definition of the protection index IP67 and standard IEC 60529.



Ordering Information	Description	Packing Unit	Part Number
<p>090.2124</p> 	<p>IP67 Mounting Frame for 1-Channel Modules Compatible with SC-RJ and RJ45 1-channel modules</p>	5	R309588
<p>010.2860</p> 	<p>Connection Module, Cat. 5e 1x RJ45/s Cat. 5e connection module with one shielded RJ45 port. Included are an EMC cover, a dust cover, one cable tie and mounting instructions.</p>	10	R925370
<p>010.3206</p> 	<p>IP67 Coupler Module RJ45 Cat. 5</p>	1	R309590

Ordering Information	Description	Packing Unit	Part Number
<p>010.3210</p> 	<p>RJ45 IP67 Patch Cord, shielded SF/UTP 2P, LSFR0H, Cat. 5e (2 pairs) 5.0 m</p> <ul style="list-style-type: none"> – Connection 1:1 – Diameter conductor: copper strand AWG26 – Outer diameter: 5.1mm – Temperature range: –20°C to +60°C <p>RJ45 IP67 to RJ45 IP20 RJ45 IP67 to RJ45 IP67</p>	<p>5 5</p>	<p>R309320 R309321</p>
<p>020.9283</p> 	<p>Industrial Data Cable, Cat. 5e, S/FTP 4P, LSFR0H</p> <p>Cable properties</p> <ul style="list-style-type: none"> – Conductor diameter: 0.22 mm (strand) – Cable diameter: 7.50 mm – Fire classification: IEC 61034, IEC 60754, IEC 60332-3C – Oil resistance: standard CEI 20.34, 4 hours, 70 °C – Temperature range: –20 °C to +60 °C 	500 m	R309319
<p>010.3208</p> 	<p>Protective Cover for the IP67 Mounting Frame</p> <p>Protective cover for contact inserts in mounting frames or sleeve housings.</p>	5	R309589
<p>010.3209</p> 	<p>Color Coding for the IP67 Plug Housing</p> <p>Compatible with SC-RJ IP67 and RJ45 IP67</p> <p>Supplied:</p> <ul style="list-style-type: none"> – Orange, qty 50 – Blue, qty 50 – White, qty 50 – Yellow, qty 50 	1	R310262

SC-RJ connectors, IP67



With the SC-RJ IP67 we have developed a new fiber-optic connector of protection class IP67 that incorporates a unique range of features, supporting for example applications of up to 10 gigabit Ethernet. The connector system is a first of its kind for industrial applications, designed in Small Form Factor and featuring 2.5 mm ferrule technology, a safety system and double color coding.

Ordering Information	Description	Packing Unit	Part Number
020.0700	<p>FO Adapter SC-RJ IP67 PhBr Supplied:</p> <ul style="list-style-type: none"> – 1 adapter plus mounting plate for IP67 – 4 dust covers 	12	R309641
	<p>FO Adapter SC-RJ IP67 Ceramic Supplied:</p> <ul style="list-style-type: none"> – 1 adapter plus mounting plate for IP67 – 4 dust covers 	12	R311496
090.2109	<p>Pre-Assembled Field Cable with SC-RJ IP67 – SC-RJ IP67 or one-side assembled* with an R&Mfreenet installation cable pur 2 x 50/125 µm Supplied:</p> <ul style="list-style-type: none"> – Customized length – Test protocol – 50 meters and up are delivered on cable drums – * One-side assembled available with the connector types IP20; 2 x ST, E-2000™ Compact, 2 x SC-Simplex, SC-RJ 		On request
090.2039	<p>FO SC-RJ Adapter IP67 Supplied:</p> <ul style="list-style-type: none"> – Cover for protection – Side lugs for wall mounting 	1	R310724

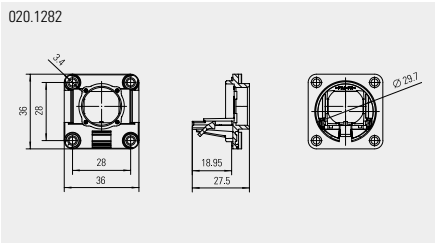
090.2071



These surface-mounted housings are UL approved and made of polycarbonate RAL 7035. They feature smooth side panels and captive cover screws made of stainless steel.

- Thermal resistance from -50°C to $+100^{\circ}\text{C}$.
- Protection index IP66/67 acc. to EN 60529
- Protection index NEMA 4
- Approbation to: Germanischer Lloyd
UL, cUL, GOST
SGS Fimko EN 50298
- Impact resistance IK08 acc. to EN 50102

020.1282



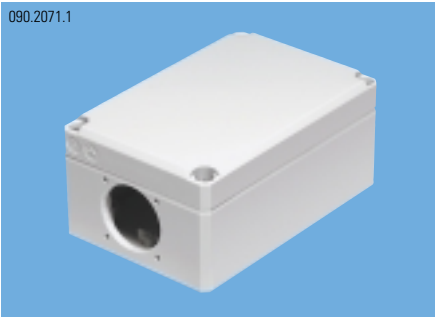
Ordering Information

Description

Packing Unit

Part Number

090.2071.1

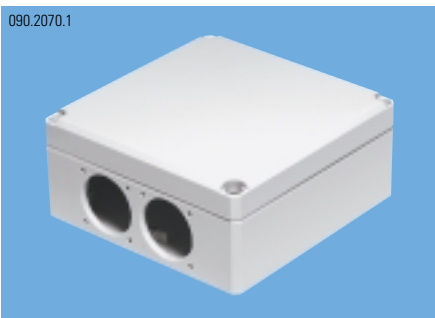


SM Wall Outlet IP66/67, 80 x 120 x 56, empty
For one IP67 mounting frame R309588 with a M20 cable gland R310726.
Ready for SC-RJ IP67 and RJ45 IP67
Supplied, i.e. prepared drillings for:
– 1 IP67 mounting frame
– 1 M20 cable gland

1

R311624

090.2070.1

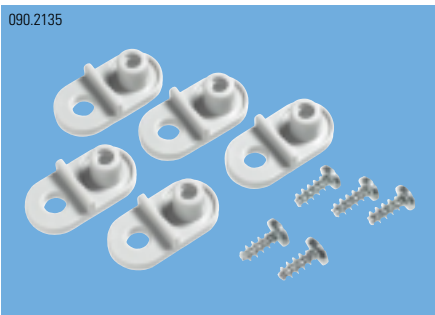


SM Wall Outlet IP66/67, 120 x 122 x 56, empty
For two IP67 mounting frames R309588 and 2 M20 cable glands R310726.
Ready for SC-RJ IP67 and RJ45 IP67
Supplied, i.e. prepared drillings for:
– 2 IP67 mounting frames
– 2 M20 cable glands

1

R311625

090.2135



SM Mounting Lugs
For mounting the SM wall outlet IP66/67
Supplied:
– 4 mounting lugs
– 4 screws

1

R311626

**Wall-mount distributors
IP66/67**

090.2034



The WM sheet steel housing IP66 is coated with a standard NCS 2502-B powder-structured finish.

Housing: Bent to shape and seam welded. Four grooves in the rear wall, 20.4 mm in diameter and 2 mm deep, ensure air circulation behind the housing when wall mounted.

Door: Overlay, opening angle up to 130°. The door is removable and can be mounted on four sides. The door can be locked with DIN locking.

Ordering Information

Description

Packing Unit

Part Number

090.2036



**Wall-Mount Housing IP66, 4-Port
200 x 200 x 80**

1

R310723

The standard configuration of the small IP66 wall-mount housing includes:

- 4 IP67 mounting frames with protection covers
- 4 drillings for M20 cable glands with blind covers
- 1 drilling for a M32 cable gland with blind cover
- 1 radius guard 30 mm
- Wall-mounting kit and instructions

090.2034



The standard configuration of the large IP66 wall-mount housing includes:

- 6 IP67 mounting frames plus protection covers
- 6 drillings for M20 cable glands plus blind covers
- 2 drilling for M32 cable glands plus blind covers
- Mounting plate for splice trays R30/R40, pigtail holders or cable guides
- Wall-mounting kit and instructions

1

R310722

010.3205



IP67 Cable Gland with Counter nut

IP67 M20 cable gland

1

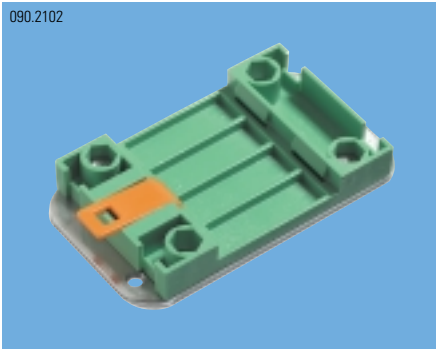
R310726

IP67 M32 cable gland

1

R310727

090.2102



With DIN-top rails any installation in switch cabinet housings or cable shafts is quick and simple and no additional screws are needed.

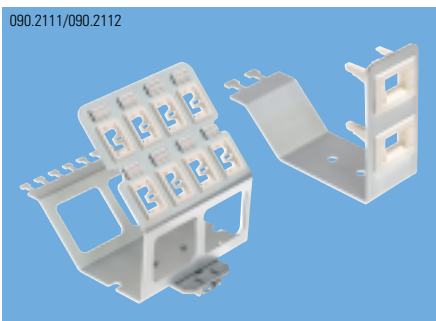
Ordering Information

Description

Packing Unit

Part Number

090.2111/090.2112



Patch Field DIN Rail with Module Holder for RJ45, SC-RJ, E-2000™ Compact

Patch field DIN rail, parts 8
Patch field DIN rail, parts 2

1
1

R311181
R311182

090.2110



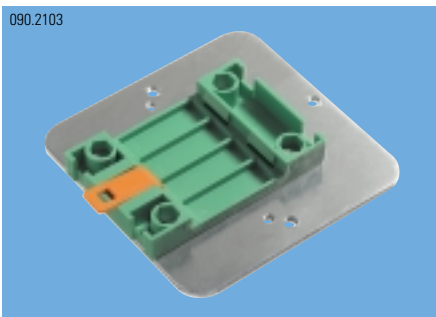
R&M Patch Box, empty

For 2 x Universal units
Compatible with 5 x 1-port Universal units
Supplied:
– Housing 97 x 133 x 137 mm
– DIN rail mounting plate

1

R309966

090.2103



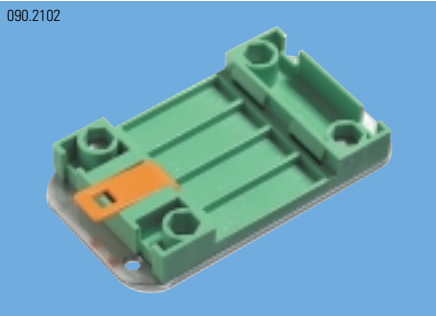
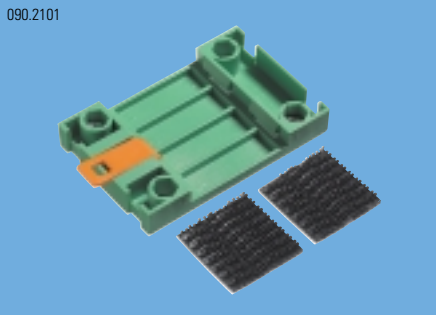
DIN Rail Mounting Plate 85 x 86 mm

Including mounting kit
Matching components:
– FO outlets: R303458, R303462, R303452, R303454, R303496, R304971
– Splash outlets: R307038, R307039

1

R311160

DIN rail mounting plates

Ordering Information	Description	Packing Unit	Part Number
<p>090.2102</p>  A green plastic DIN rail mounting plate with a central orange slot and four mounting holes. It is shown from a perspective view against a blue background.	<p>DIN Rail Mounting Plate 45 x 80 mm Including mounting kit Matching components: – Mini surface mount box R925728</p>	1	R311161
<p>090.2101</p>  A green plastic RCO DIN rail mounting plate with a central orange slot and four mounting holes. It is shown from a perspective view against a blue background, with two black terminal strips placed below it.	<p>RCO DIN Rail Mounting Plate Including mounting kit Matching components: – New Global outlet R310786</p>	1	R311559