

Qualified Partner Programme QPP

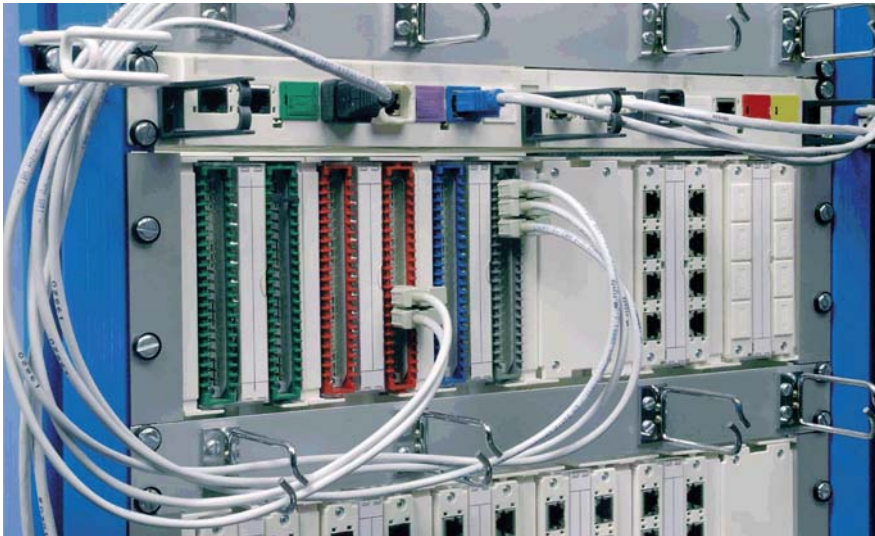
R&M Patch Panels

Felice Guarna



Convincing cabling solutions

R&M 19" patch panels



Features

- Patch panels are used for terminating horizontal or backbone installation cables and form an interface to the various network equipment.
- Interconnect to active components or Cross Connect point.
- Distributor of the different network media.
- Simple service administration and maintenance.

R&M 19" patch panels

- Patch panels and connection modules are according to ISO/IEC 11801, EN 50173 and EIA/TIA 568A standards.
- In order to fulfill the demands of the U.S. market, and sometimes also of European market, R&Mfreenet patch panels and connection modules are UL and CSA certified.



R&M 19" patch panels (R&Mfreenet)

Copper

- 19" 1U Patch panel 16 Ports
- 19" 1U Patch panel 24 Ports
- 19" 3U Global system

Customised

- 19" 2/3U modular 5
- 19" 4U modular 6

Fibre optic (see dedicated section)

- 19" 1U FO rack (drawer)
- 19" 1U FO rack 36 ports (fix)
- 19" 3U FO global system




Customised

- SC-RJ adapter (any R&Mfreenet panel)

Overview R&M 19" copper patch panels (R&Mfreenet)



Customised

19" Application	1U	2U	3U	4U	Cable Organizer
	16 Port	-	-	-	
	24 Port			-	
			48/60 Port		
			60 Port	84 Port	

R&M module

Modularity concept of R&M connectivity

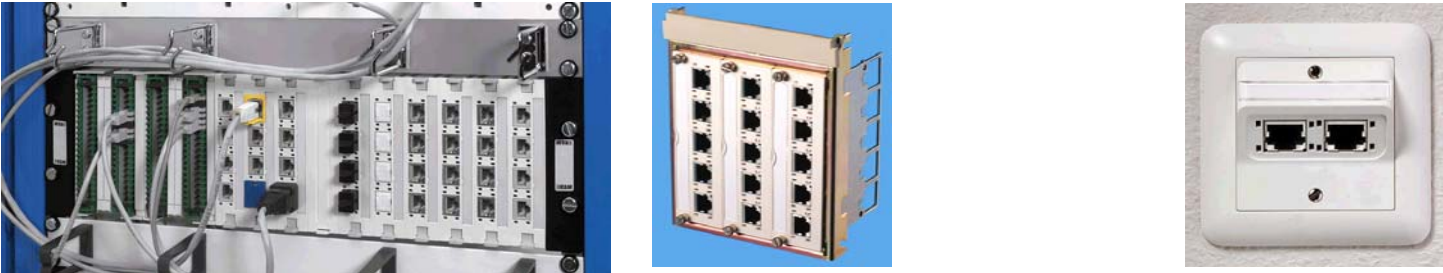
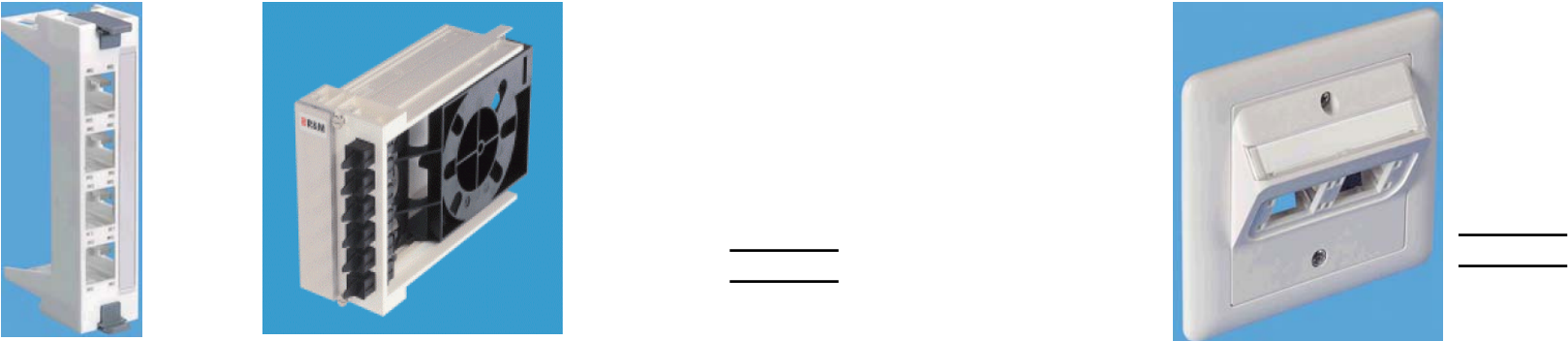
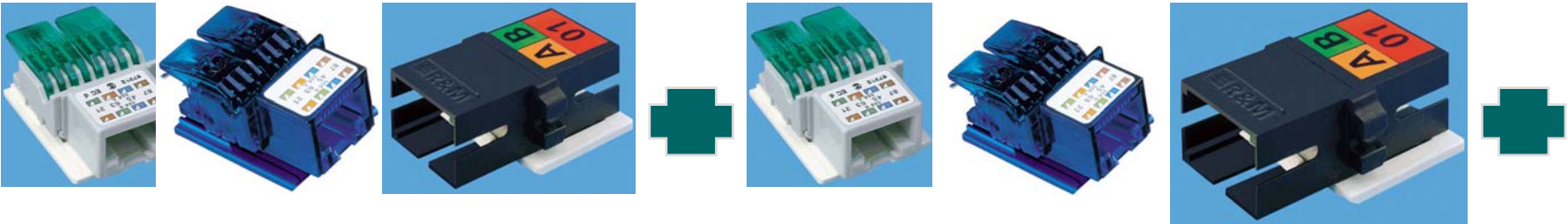
1 Port module RJ45, Cat. 5e, Cat. 6 SC-RJ

- 19" 1 / 2 / 3 / 4 U patch panel
- 19" 3 U copper patch panel
Global system
- Suitable for wall mount channel
(modular 5 and modular 6)

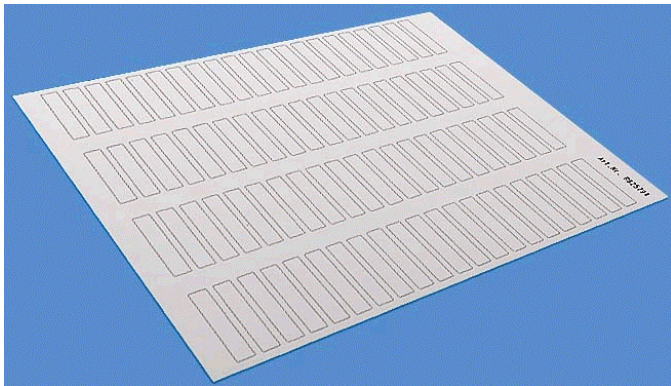
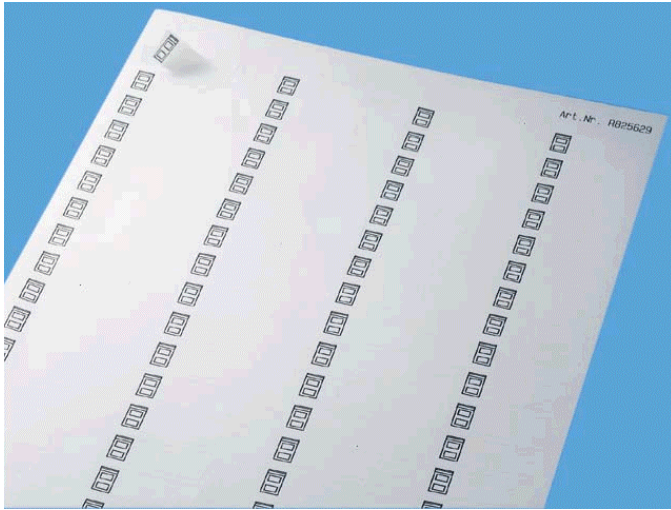
4 Port modules RJ45, Cat. 5e, Cat. 6

- 19" 1U patch panel standard
- Suitable for wall mount (channel
installation)

R&M 19" Patch panels (R&Mfreenet) modularity



Accessories for R&M 19" patch panels (R&Mfreenet)



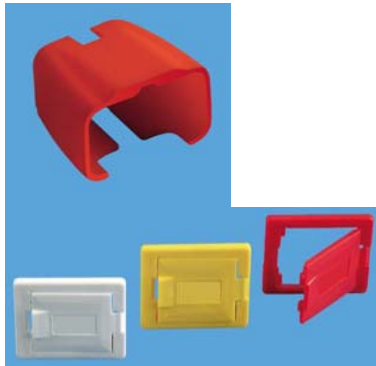
Labelling sheets

- A4 label sheets available for any panel and outlet.
- Printing easy and flexible using [R&M label wizard](#).
- Multilingual version (Eng./Ger.) for Microsoft Windows 95/98 and NT4.0.
- [Instructions for printing labels](#) available on WEB or QPP



Security accessories for R&M 19" patch panels

Applicability



Safe clip

All patch cords for all panels

Colour coding

All panels other than 24 ports



Data safe lock

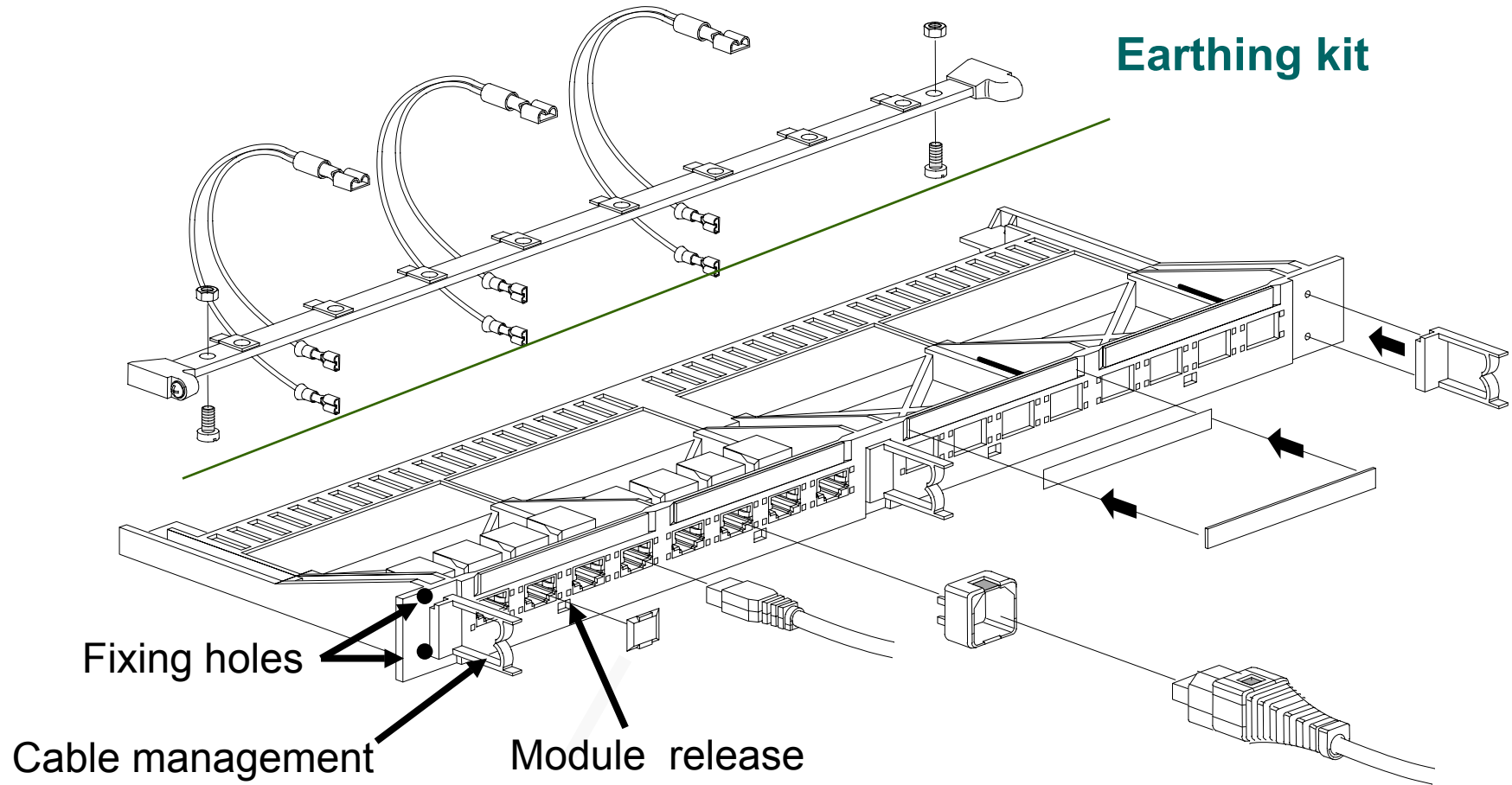
All panels other than 24 ports



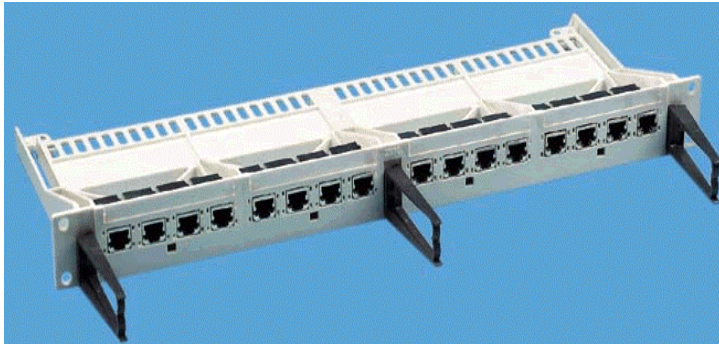
Plug guard

All panels other than 24 ports

19" 1U 16 ports patch panels



19" 1U patch panel standard, 16xRJ45/s



Features

- Made in one part from fibre glass reinforced polycarbonate (white/RAL 9010)
- Integrated jumpering brackets
- Integrated cable support
- High connectivity density: 16 RJ45 ports within 1 unit of vertical rack space
- Suitable for use with "Data Safe Lock" keying system
- Labeling window with exchangeable, self-adhesive labeling strips
- UL and CSA certified

The 24 ports patch panel...

- Increase our market position
- Fulfil our customer needs respect to:
 - Saving space (high density)
 - Integration of our SC-RJ FO connector
 - Match latest port requirement of active equipment
 - Add rack space flexibility
- Developing new customer segments
 - SOHO
 - Server/storage farms
- Complete our solutions offering

The 24 port patch panel: benefits

- Shielded and unshielded connection modules on same panel
- Port numbering integrated on the front plate (punched)
- Customer specific labelling possible
- "Snap" in due to a newly developed mounting system (snapper)
- Colour coding up to 8 different colours
- Integrated cable tie shelf
- Direct earthing due to our new grounding concept (easy, fast, safe)
- New jacks generation (Cat. 6 and FO) will use this panel
- Double mechanical locking (snap-in and fixing clips to secure jack)

Technical benefits

- **19", 1U dimension (BxHxT) 482,6x43,6x150**
- **Material patch panel**
 - Steel tinned
 - Zinc-plated
- **Material earth clip**
 - Copper sheet metal
 - tinned

Technical benefits

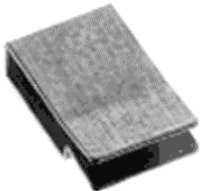
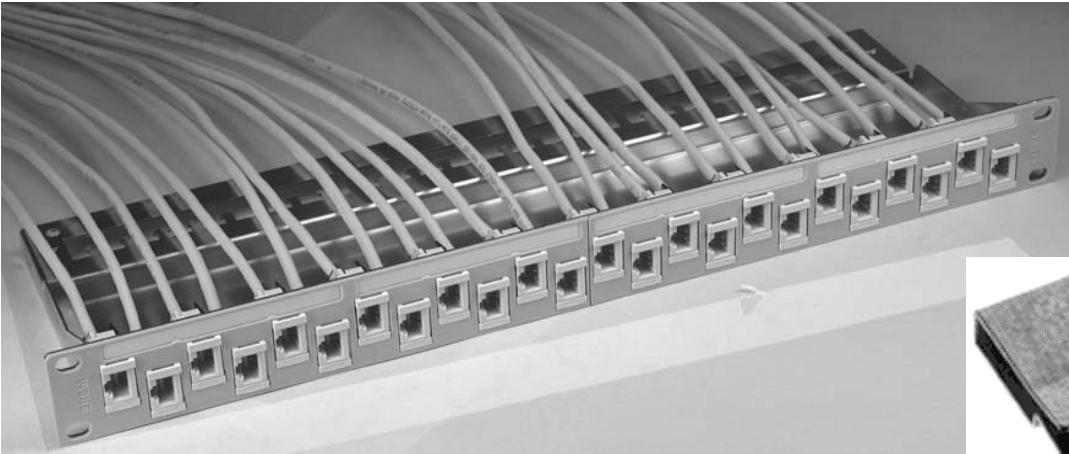
Clip

- Material: polypropylen, halogen free according DIN/VDE 0472/815
- Flammability rating UL94V-0
- Color: several

"Snap-In" frame

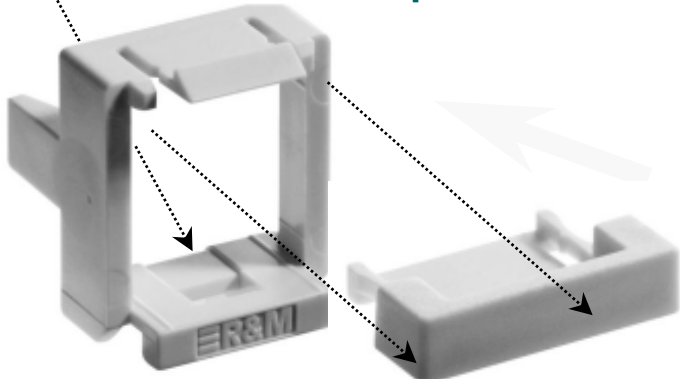
- Material: polypropylene
- Flammability rating UL94V-0
- Color: grey/RAL7035

Earthing mounting details



Earthing clip

Snap in frame



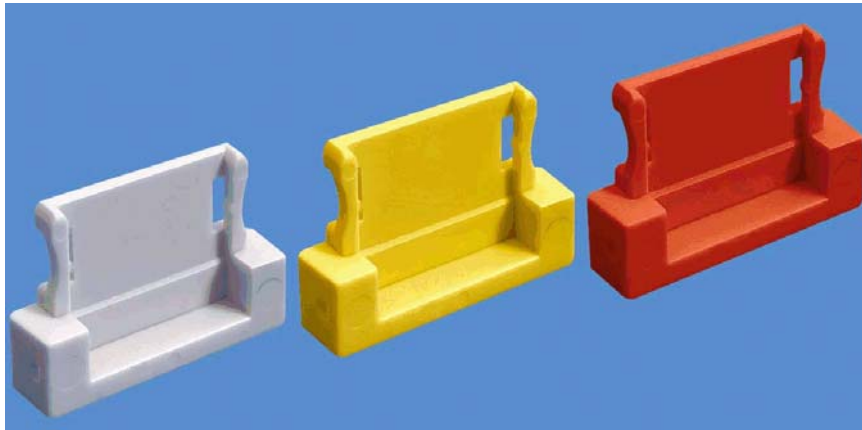
Colour clip



Ground bonding screw

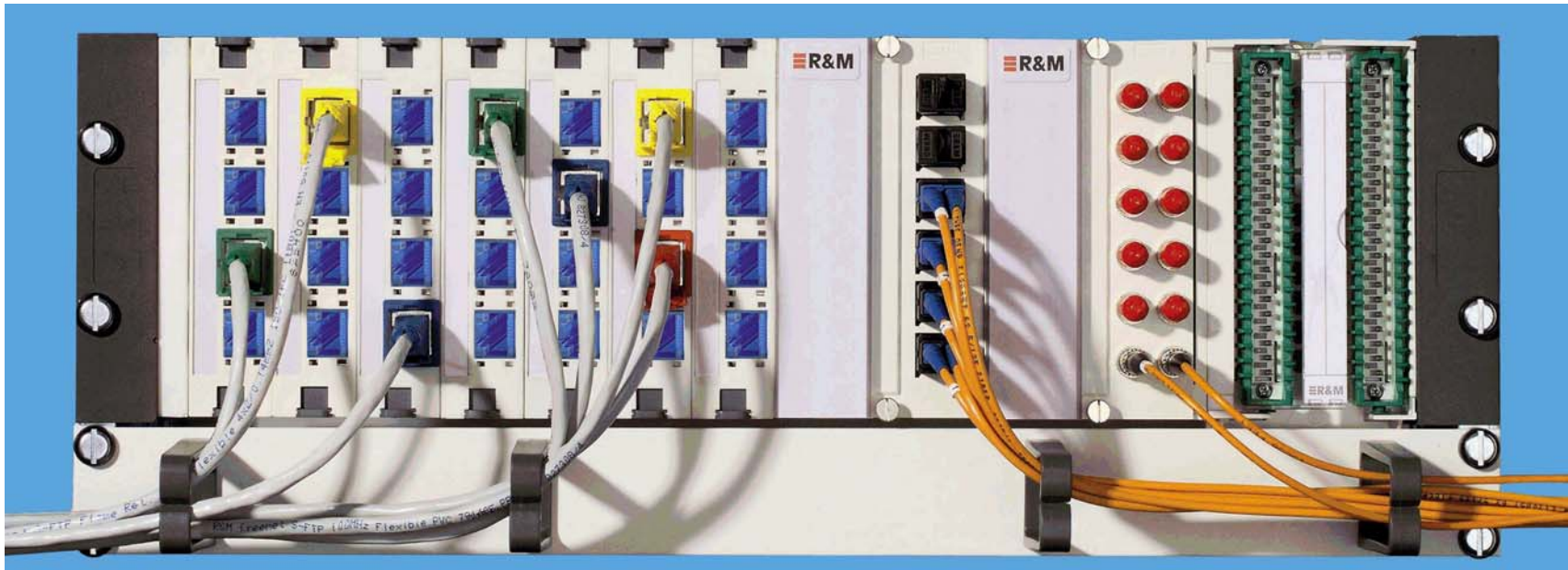


Colour coding clip

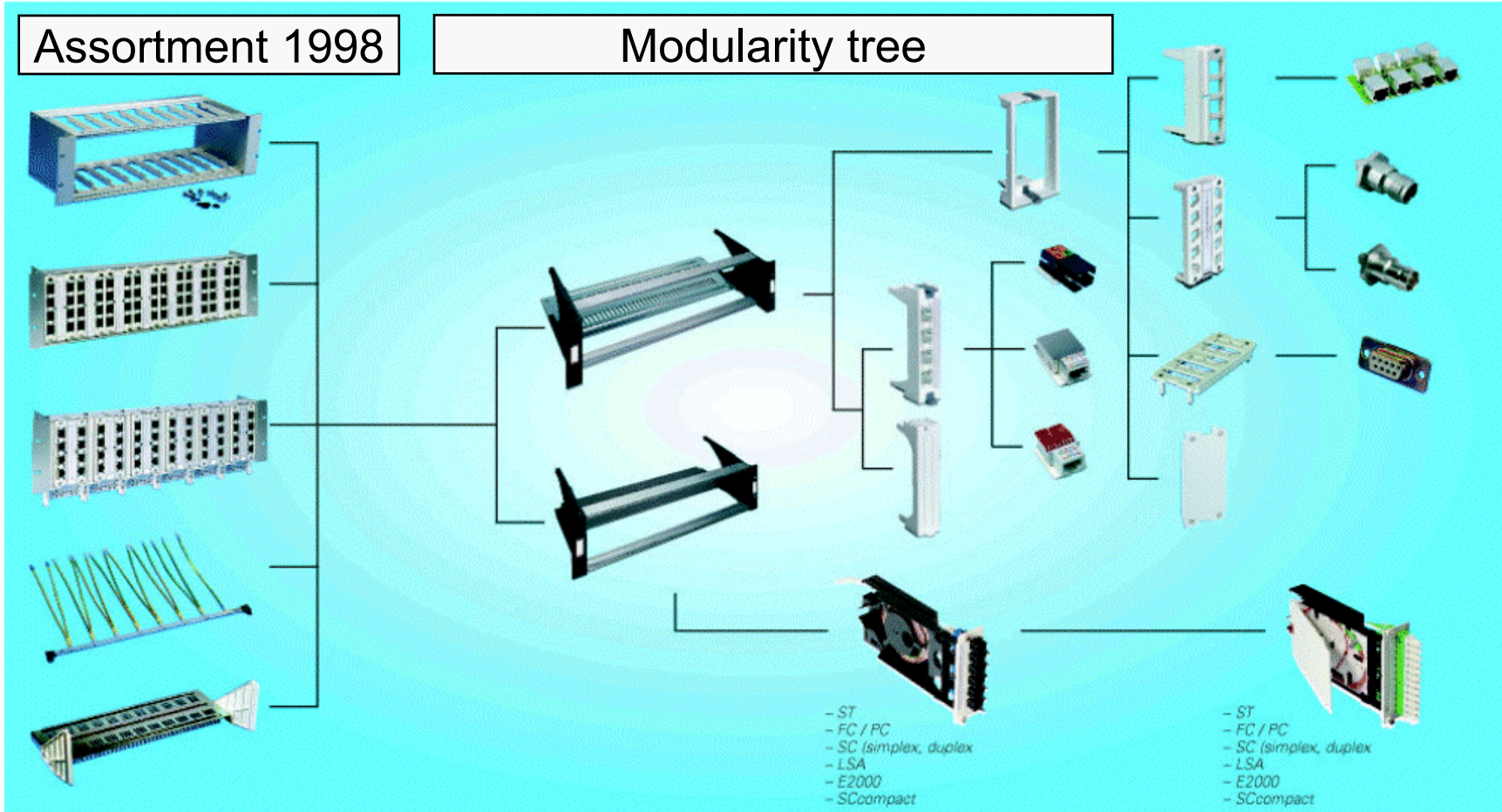


- Mechanical coding clip
- Colour coding
- UL/CSA certification in progress
- According to UL94HB

3U patch panel "Global System"



Global system replaces old assortment



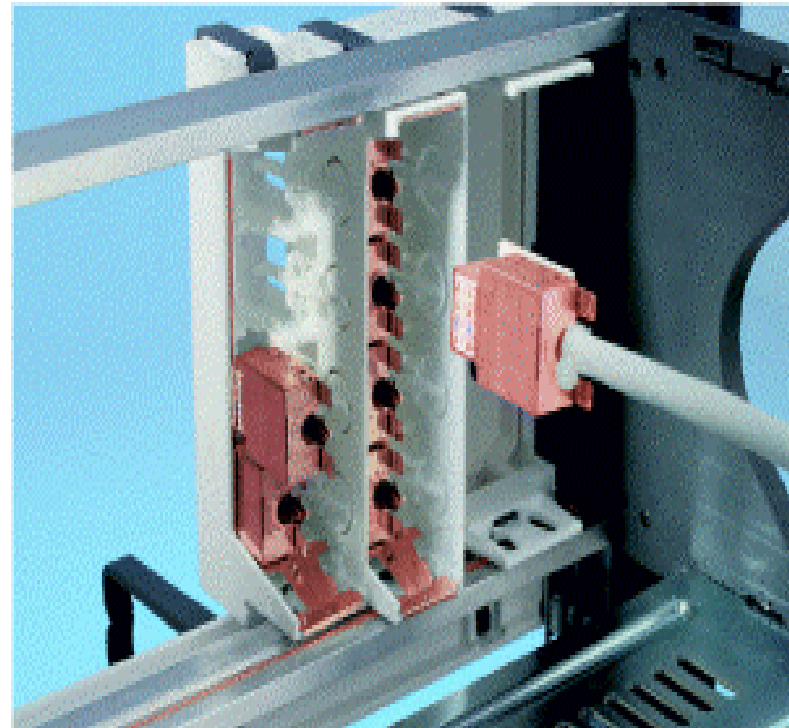
Easy mounting of the patch panels



- With the new "**Snap & Go**" mechanism you save time and money.
- There is no easier way!
- No more tools, nor thumb screws
- No need to connect to ground!
It's automatic

Smart earthing - and shielding - concept

- Earthing and shielding was never as easy!
- Patented shield contact bayonet
- Automatic contacting of the connection module shield with the earthing point when being slid in

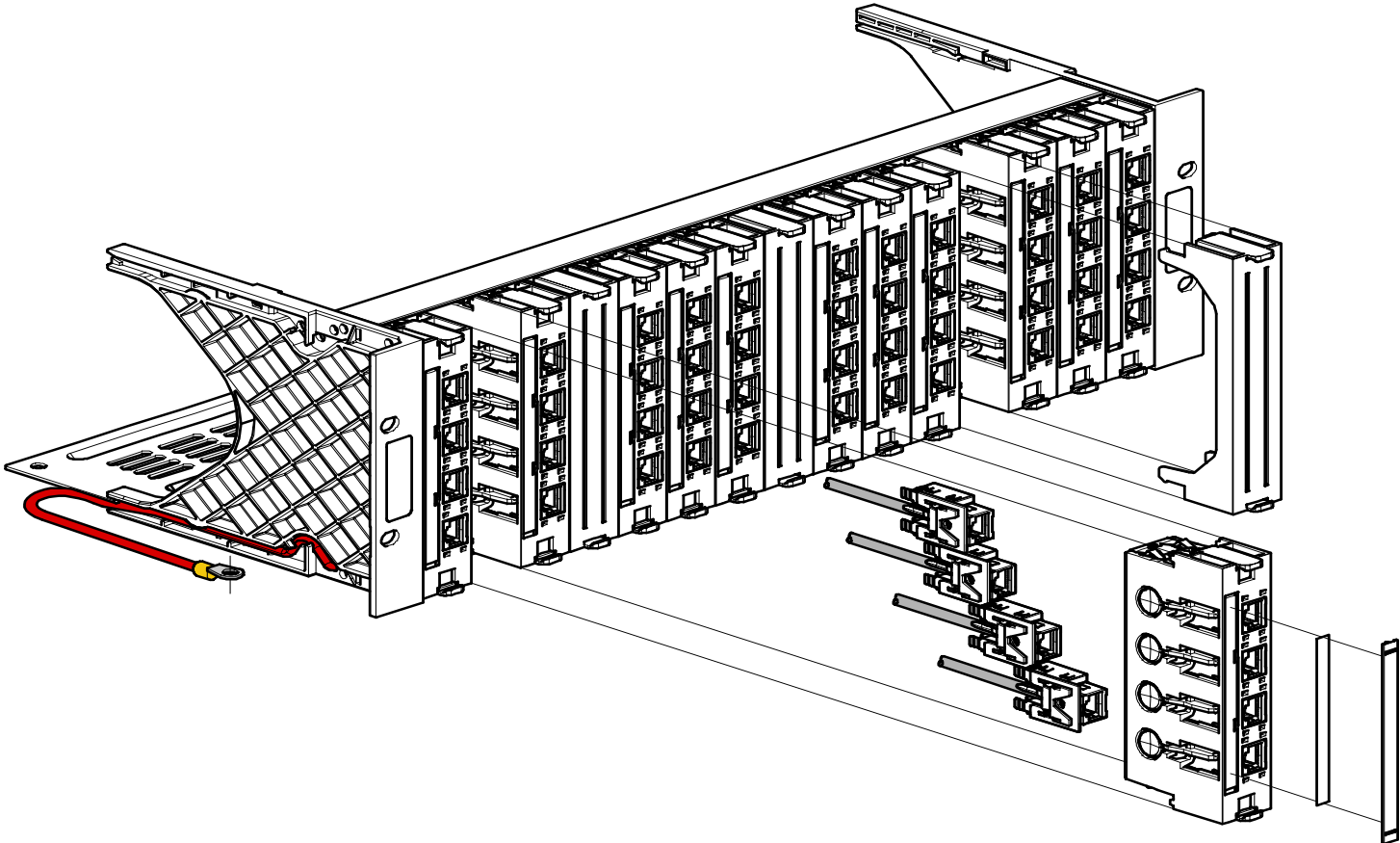


The 3U patch panel "Global system"

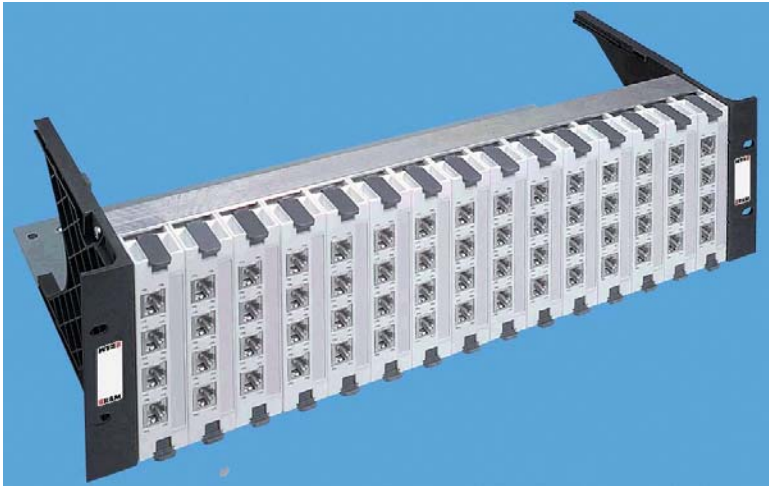
The "Global system" is a patch panel of new generation with various benefits:

- 100% toolfree assembly of all global inserts.
- **"Snap & Go"** due to a newly developed mounting system.
- Time saving during installation and services guaranteed.
- Earthing is an integrated part on the shielded version.
- Cable tie shelf is an integrated part of all panels.
- Full backwards compatible to the standard system.
- The base of all future R&Mfreenet design.

19" 3U patch panel global system



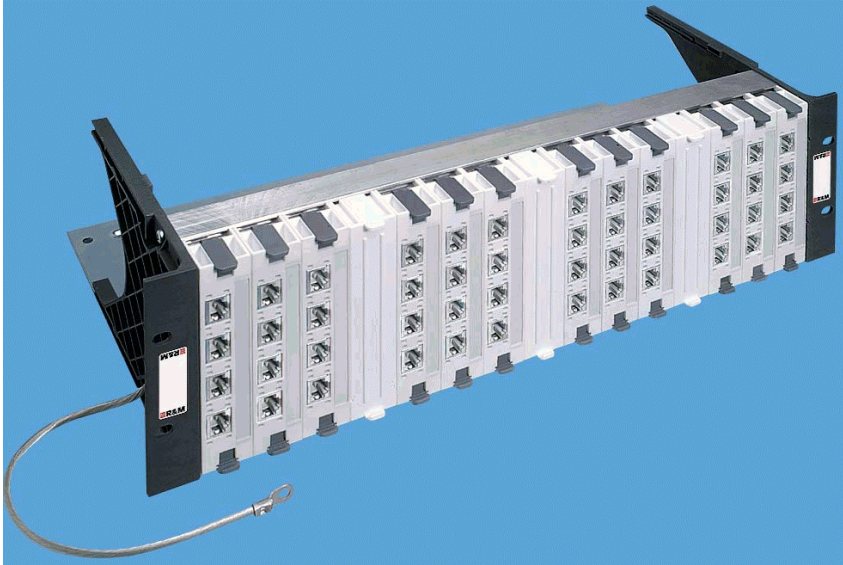
19" 3U patch panel global system 60xRJ45/s



Features

- 100% toolfree assembly.
- **"Snap & Go"**.
- Time saving installation.
- Earthing integrated.
- Cable tie shelf integrated.
- Base for next module generation.
- Will be UL/CSA tested.
- Fully backwards compatible.
- Labelling windows with exchangeable labelling strips.

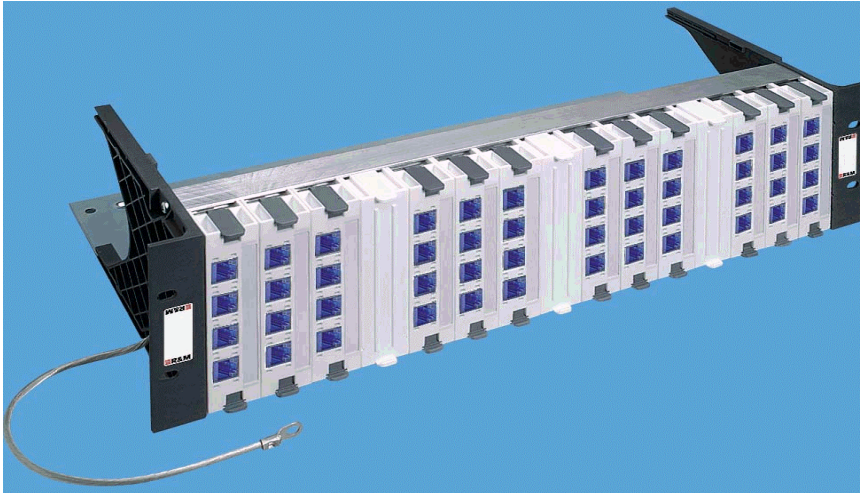
19" 3U patch panel global system 48xRJ45/u



Features

- 100% toolfree assembly.
- **"Snap & Go".**
- Time saving installation.
- Cable tie shelf integrated.
- Base for next module generation.
- Will be UL/CSA tested.
- Fully backwards compatible.
- Labelling windows with exchangeable labelling strips.

19" 3U global rack/s



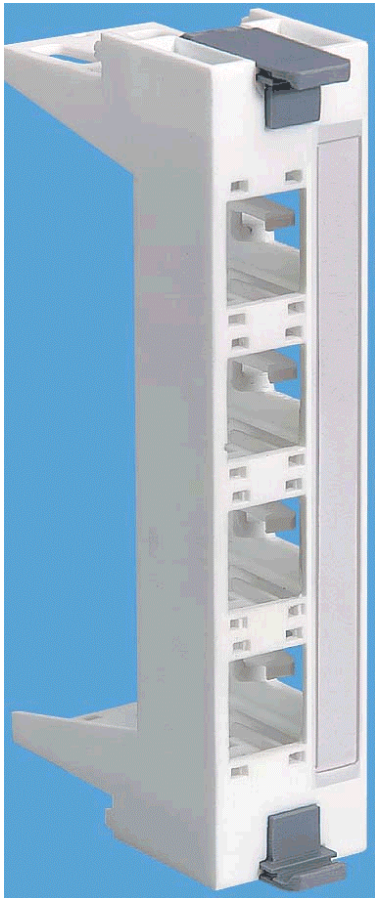
Allows combination with:

- 15 Connection module holders/s.
- 2 Adapter frames and 10 Connection module holders/s.
- 4 Adapter frames and 5 Connection module holders/s.

Adapter frame combines with:

- Blindcover for swivel element.
- Holder D-sub.
- Coax socket holder, 2x5.
- Connection module holder 4 port.

Connection module holder, global/s



Combinations:

- R825370 outlet connection module, 1xRJ45/s.

Features

- 100% toolfree assembly.
- **"Snap & Go"**.
- Time saving installation.
- Earthing integrated.
- Will be UL/CSA tested.
- Labelling windows with exchangeable labelling strips.

Connection module holder, global/u



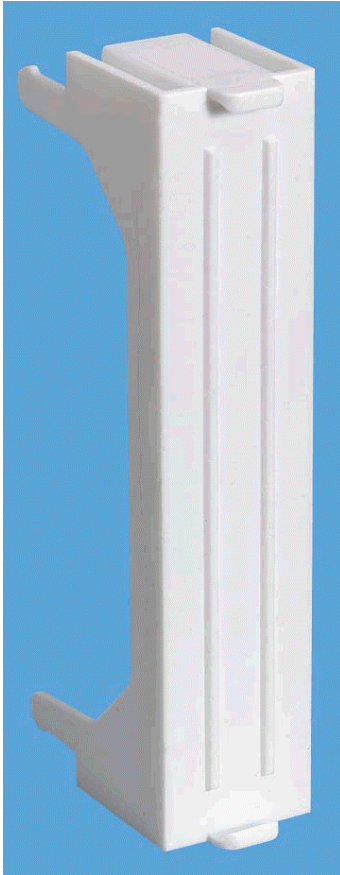
Combinations:

- R825371 outlet connection module, 1xRJ45/u.
- R30574 *SCcompact* one-channel-adaptor.

Features

- 100% toolfree assembly.
- **"Snap & Go"**.
- Time saving installation.
- Will be UL / CSA tested.
- Labelling windows with exchangeable labelling strips.

Blind cover, global



- This blind cover can be used to cover unused ports on connection module holders.
- The outer dimensions of the blind cover and the connection module holder are identical.